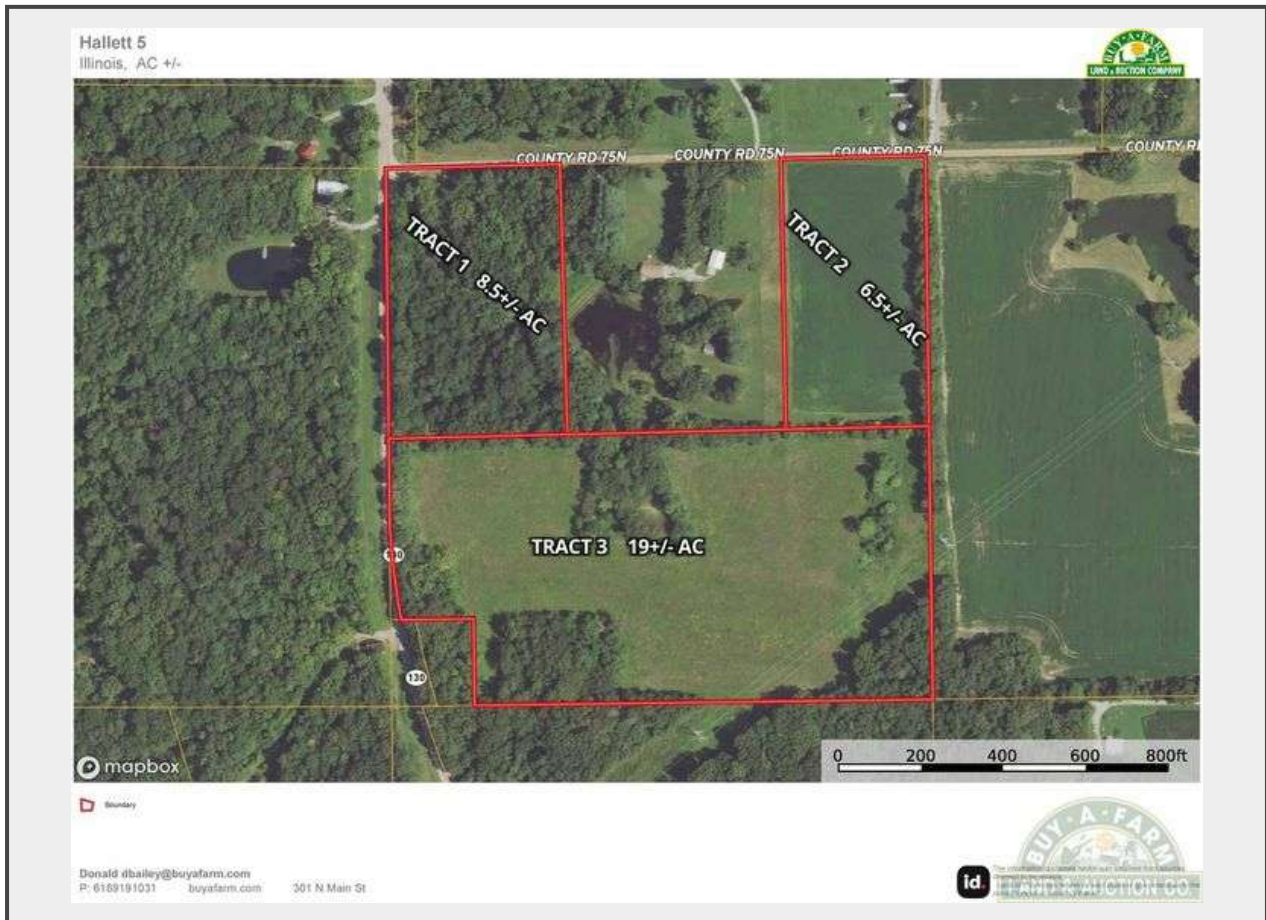


Sale Name: Cumberland County IL 33.45 Acres / 3 Tracts / Tillable CRP Income / 2919A

LOT 1 - TRACT 1



Description

TRACT 1

- 8.5+/- acres with frontage on Co Rd 75N and State Route 130
- Gently sloping to rolling
- Large timber with several building sites
- Location for ponds or lake
- Existing oil well that according to owner has not operated for some time
- EJ water on Co Rd 75N (no hookup presently)
- Starting Bid \$29,750

Quantity: 1



<https://www.buyafarm.land/>